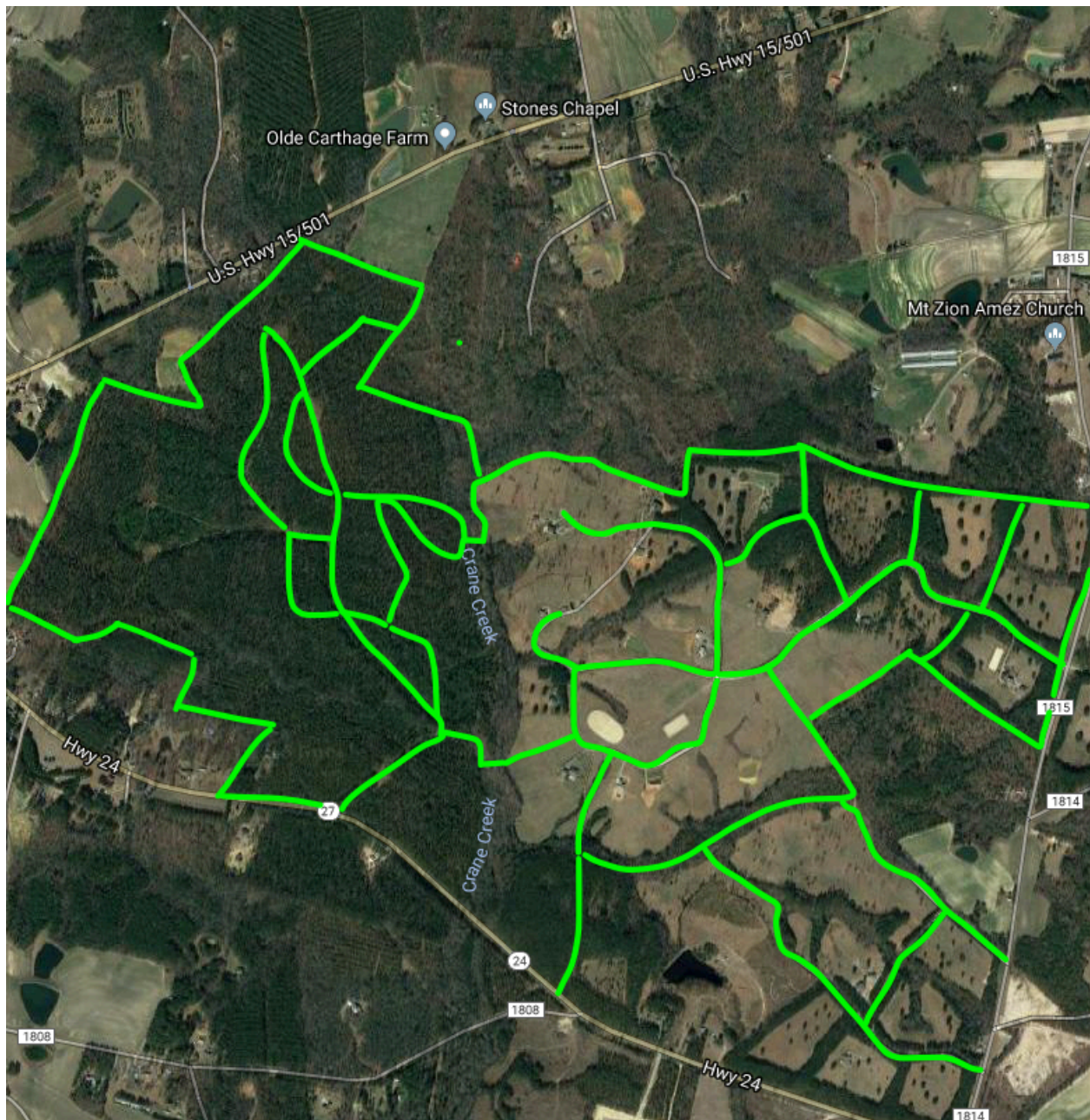


## The Fields Equestrian Community, Cameron North Carolina

*The Fields* is an upscale equestrian community conveniently located 20 minutes from Pinehurst and Southern Pines, and just one hour from Raleigh, North Carolina. Featuring a full-size dressage arena, jump arena, cross country course and over 17 miles of both challenging and serene riding trails, *The Fields* is home to people with horses or who love horses- designed by horse people who expect nothing but the best in their homes and for their horses on estate-sized lots (10 to 20 acres). For directions, [click here](#)

### Available Trails in the Fields:





## Trail Name: The Two Bridges Trail

---

**Map Description:** A fun trail through hairpin turns and the “roller coaster” trail, connecting the two bridges in Phase 3

**Distance:** 4 miles

**Link:** <https://www.maps.ie/map-my-route/viewMap.php?route=50825>



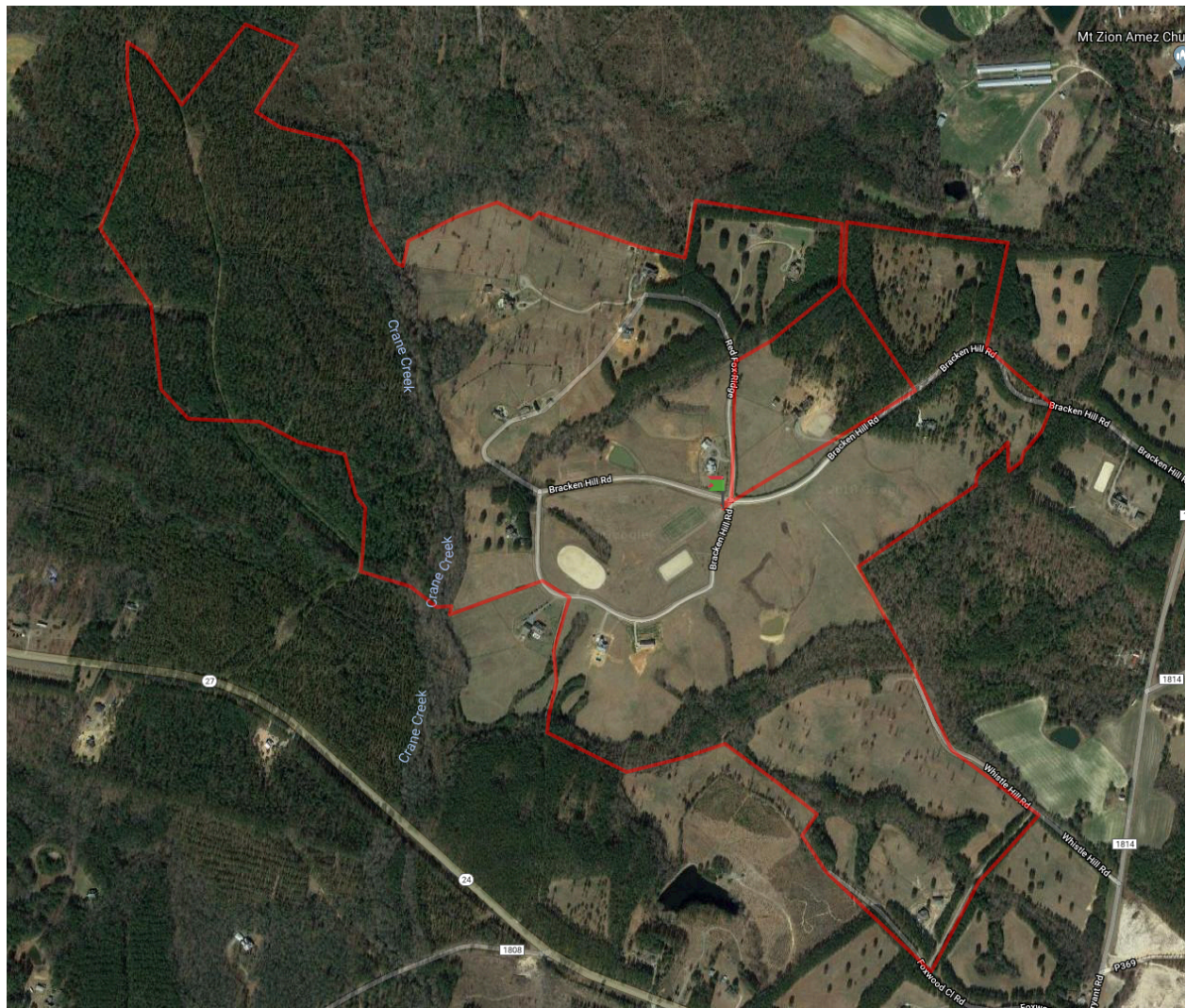
## Trail Name: The Compass Trail

---

**Map Description:** A 6 mile trail around the major sections of the Fields, including Phase 1, 2 and 3.

**Distance:** 6 miles

**Link:** <https://www.maps.ie/map-my-route/viewMap.php?route=44493>





## Trail Name: The Sherwood Forest Trail

---

**Map Description:** A 4<sup>1</sup>/<sub>4</sub> mile ride across two bridges, alongside Crane's Creek up and down a lot of steep hills and through Phase 3

**Distance:** 4.25 miles

**Link:** <https://www.maps.ie/map-my-route/viewMap.php?route=44491>





## Trail Name: The Pineneedle Trail

---

**Map Description:** A 3-mile loop taking you around parts of the perimeter of Phase 2 and into the wilderness of Phase 3

**Distance:** 3 miles

**Link:** <https://www.maps.ie/map-my-route/viewMap.php?route=44393>



## Trail Name: The Honeysuckle Trail

---

**Map Description:** A with an uphill out and back, good for hind end development

**Distance:** 2.5 miles

**Link:** <https://www.maps.ie/map-my-route/viewMap.php?route=44388>





## Trail Name: The Dewberry Train Trail

---

**Map Description:** A ride through the most beautiful parts of the Fields, including the old Dewberry Train track. Keep your eyes open for old railroad spikes buried in the sand!

**Distance:** 3.25 miles

**Link:** <https://www.maps.ie/map-my-route/viewMap.php?route=40536>

